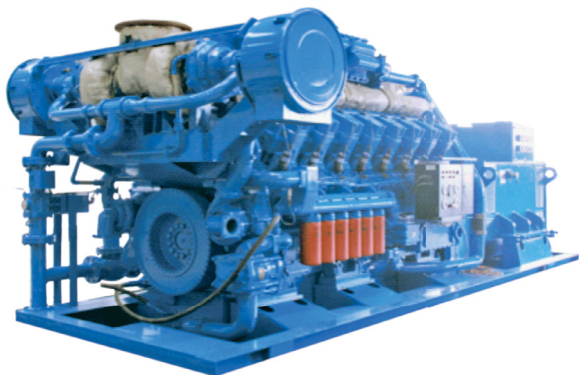


# MJ1375N 900KWe



**ENERSI** Green Technologies for energy & environment

SPECIFICATIONS	standby power	KVA/KWe	1,375/1,100
	prime power	KVA/KWe	1,250/1,000
	<b>continuous power</b>	<b>KVA/KWe</b>	<b>1,125/900</b>
	<b>thermal power</b>	<b>KWt</b>	<b>1,255</b>
	frequency	Hz	50
	rated voltage	V	400
	rated current	A	1980
	power factor	COSΦ	0,8
	noise level @1mt full load	dB(A)	—
ENGINE	model	—	H16V190ZLT-2, AVL Technology
	displacement	L	97.53
	speed	RPM	1000
	compression ratio	—	10:1
	bore*stroke	mm*mm	190*215
	starting method	—	electric start
	jacket water cooling	—	remote water cooled
	exhaust manifold	—	remote water cooled
	oil capacity	L	—
	oil cooler	—	—
	mixer	—	IMPACO, USA
	ignition system	—	WOODWARD
	speed governor	—	WOODWARD
ALTERNATOR	model	—	PI 042F
	phase	—	3 phases, 4 wires
	connecting method	—	SAE 15W/40CD, CNG special lube oil
	way of excitation	—	brushless, self-excitation
	insulation grade	—	H level
GENERATOR SET	controller cabinet	—	9902
	controller type	—	ComAp Controller IL-NT-MRS10
	fuel	—	PNG/CNG/LNG
	gas inlet pressure (MAX)	kPa	400
	protection level	—	IP23
	warranty period	—	4000 hrs or 2 years
	NG consumption @full load	NMC/h	—
DIM.	dimension	mm*mm*mm	5920*2180*2200
	net weight	kg	17,200